

PROJECT SQUARE FOOTAGE ESTIMATES

2/27/2010

MAIN	14	30	420
UPPER	14	30	420
MBR SUITE	14	20	280
CONNECTOR MAIN	12	16	192
CONNECTOR UPPER	12	16	172
Basement landing	3	7	21
TOTAL			<u>1,505</u>

REVISED SQUARE FOOTAGE 3/3/10

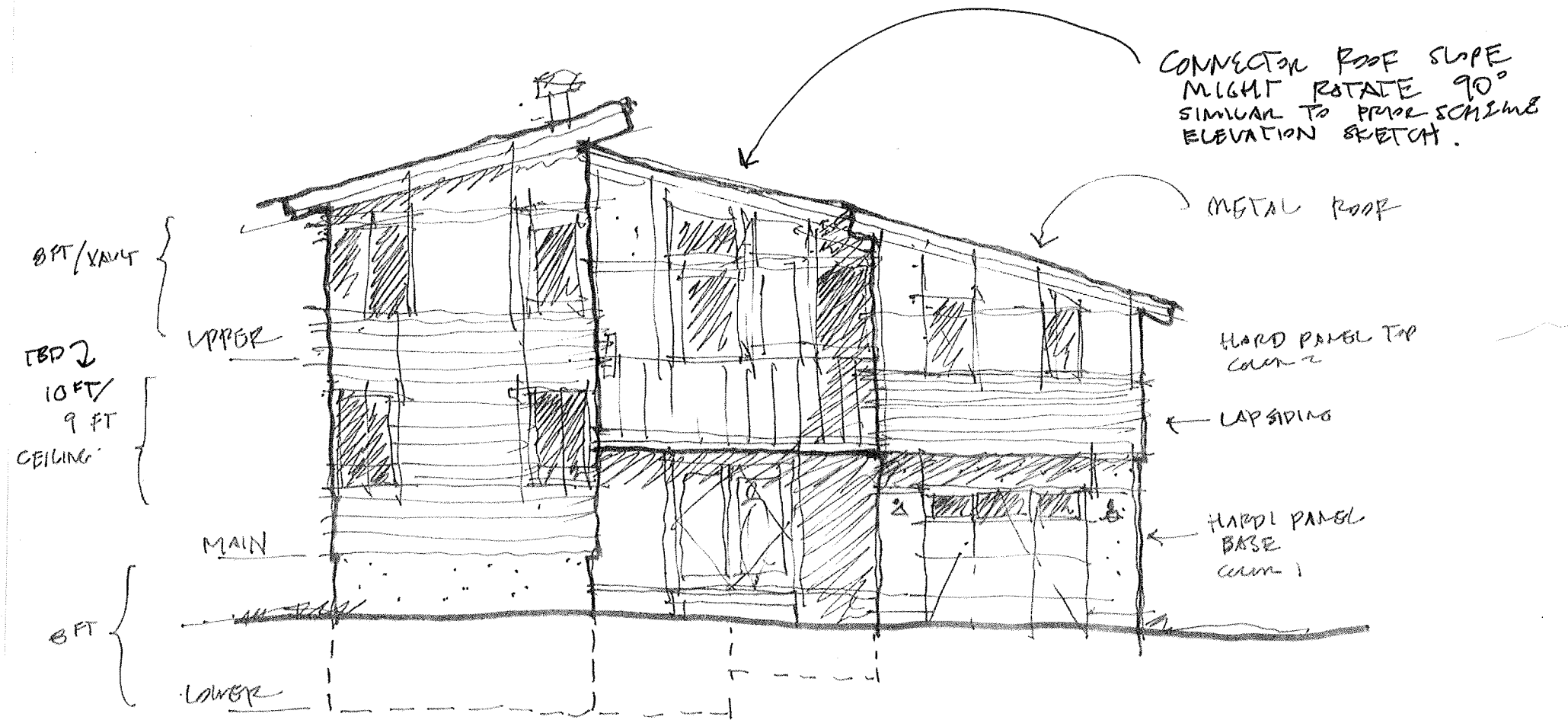
MAIN - GREAT RM	14	x	30	=	420
UPPER - KIDS BRs	14	x	30	=	420
MBR SUITE	14	x	28	=	392
CONNECTOR MAIN	12	x	16	=	192
CONNECTOR UPPER	12	x	16	=	192
(MINUS OPEN TO BELOW AREA)					-20
BASEMENT	14	x	30	=	420
TOTAL					<u>2,016</u>

GARAGE	14	x	24	=	336
BASEMENT UNFINISHED	16	x	12	=	192

* REVISED SQUARE FOOTAGE 3/5/10

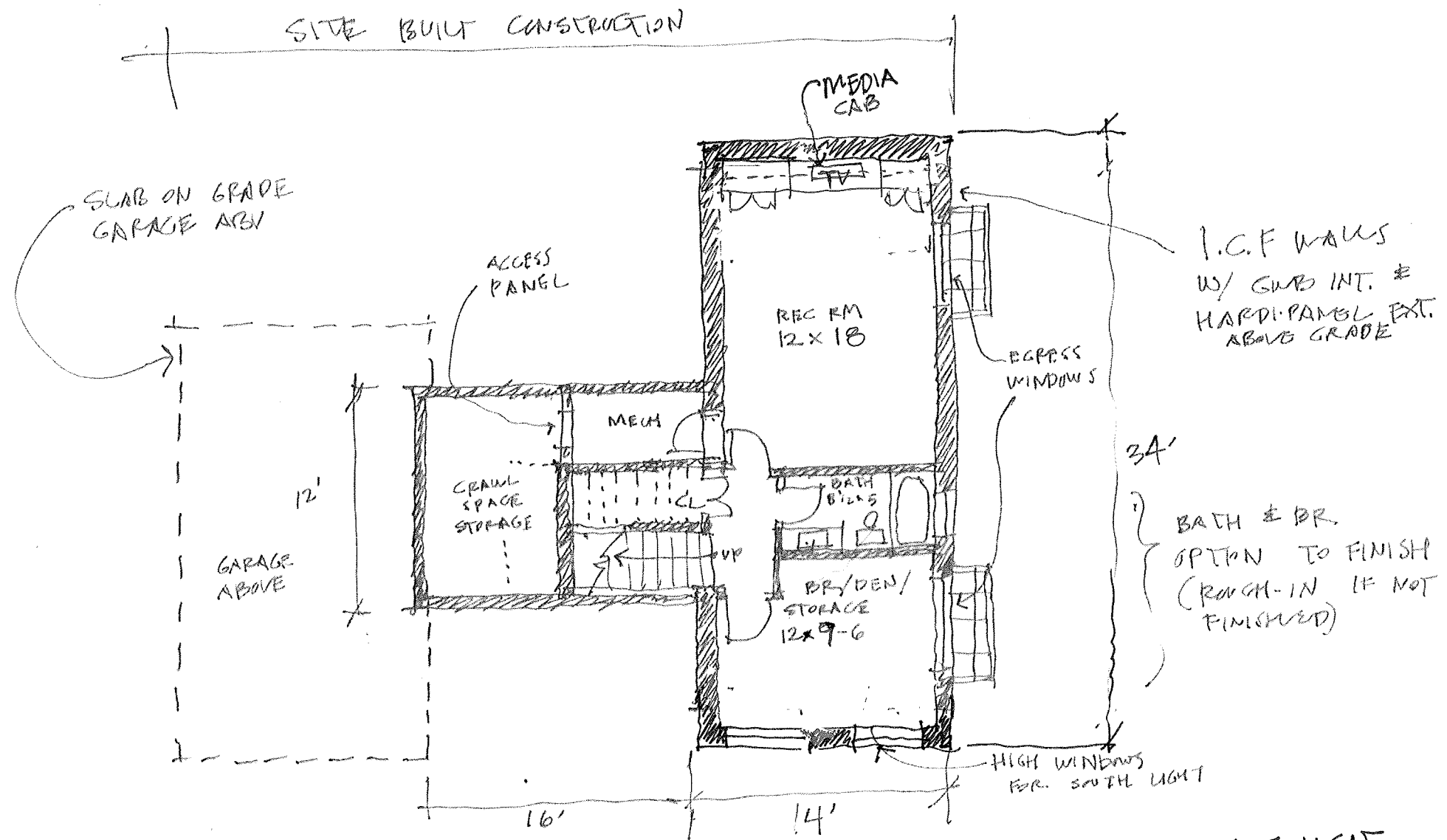
MAIN - GREAT RM	14	x	34	=	476
UPPER - KIDS BRs	14	x	34	=	476
MBR SUITE	14	x	28	=	392
CONNECTOR MAIN	12	x	16	=	192
CONNECTOR UPPER	12	x	16	=	192
(MINUS OPEN TO BELOW AREA)					-20
BASEMENT - FINISHED	14	x	34	=	476
TOTAL					<u>2,184</u>

GARAGE	14	x	24	=	336
BASEMENT UNFINISHED	16	x	12	=	192

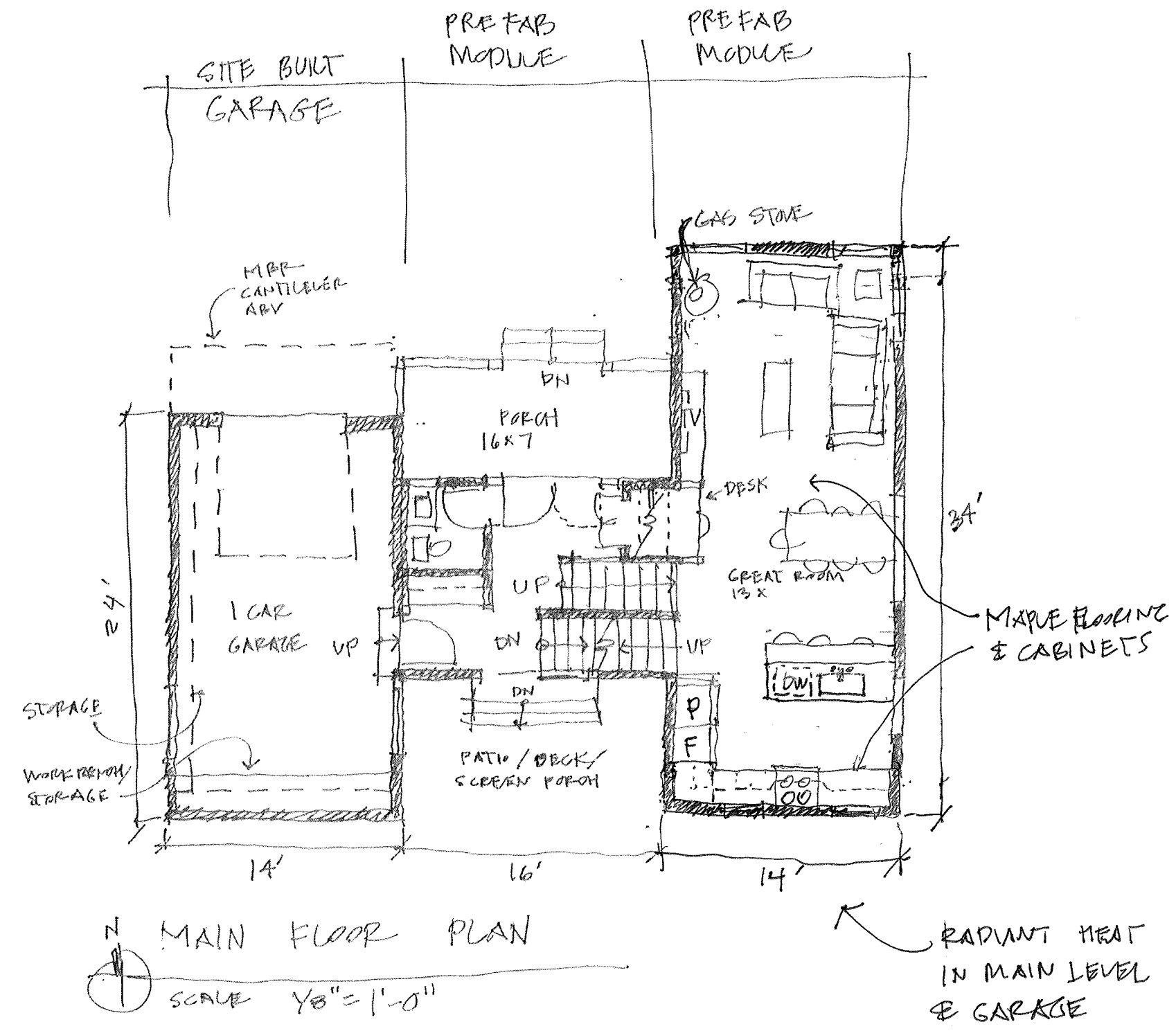
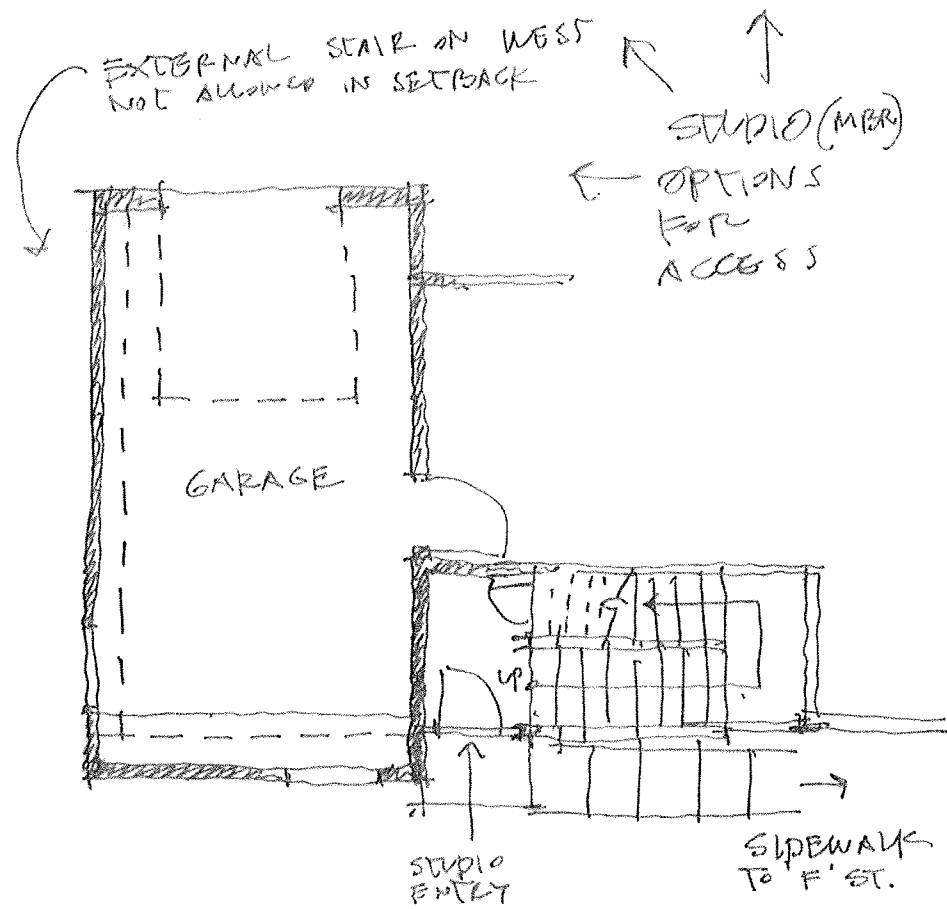
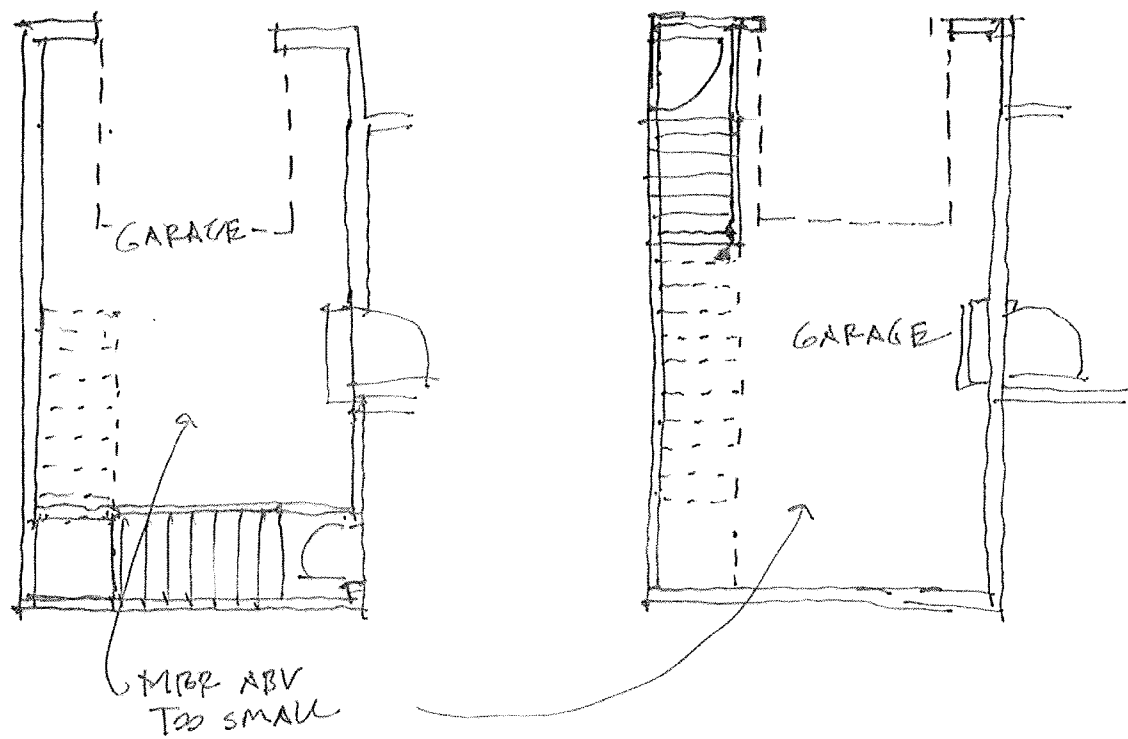


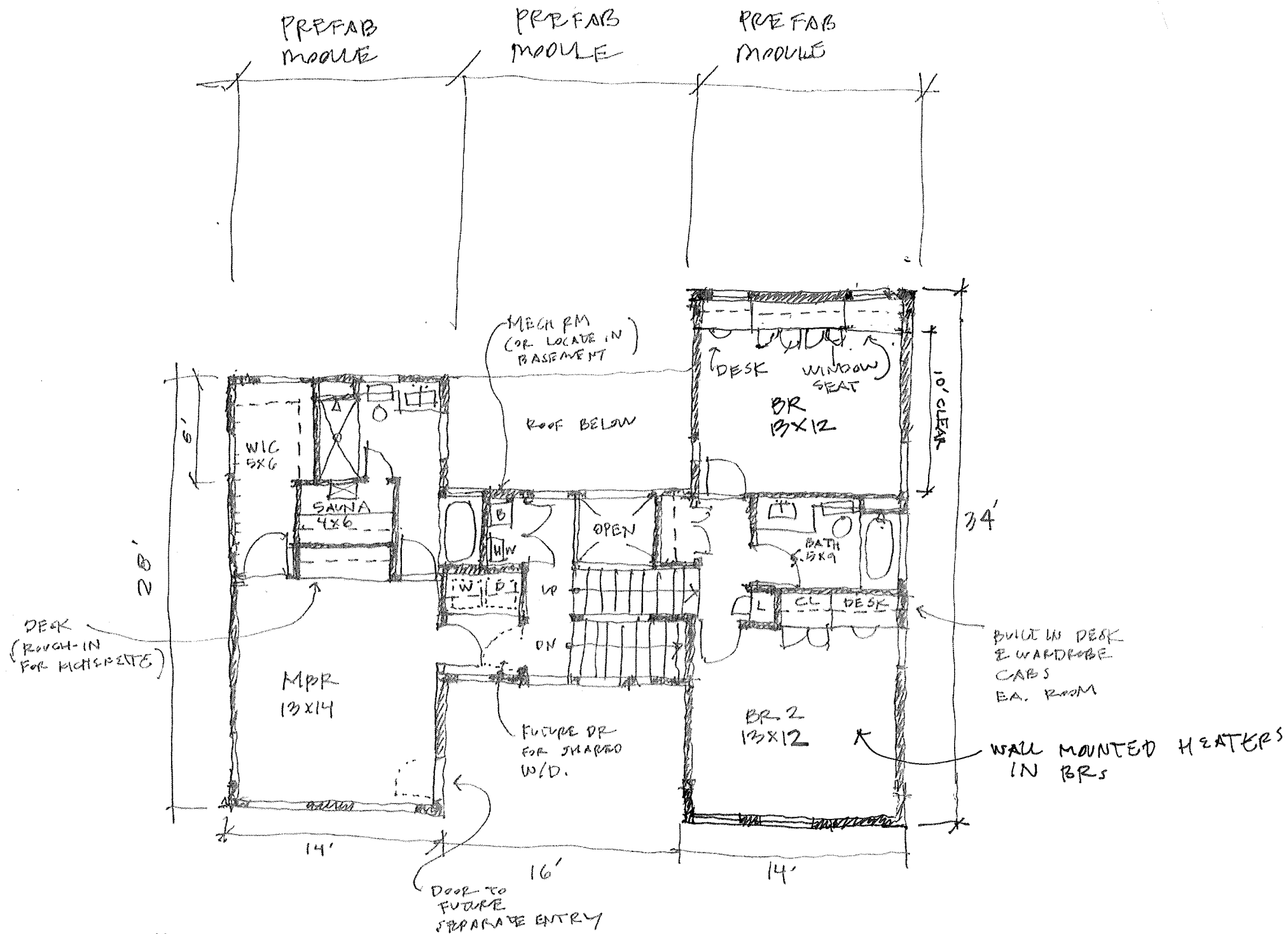
NORTH ELEVATION

SCALE 1/8" = 1'-0"



LOWER FLOOR PLAN
 SCALE 1/8" = 1'-0"





N
 UPPER FLOOR PLAN
 SCALE 1/8" = 1'-0"