

L U X U R Y



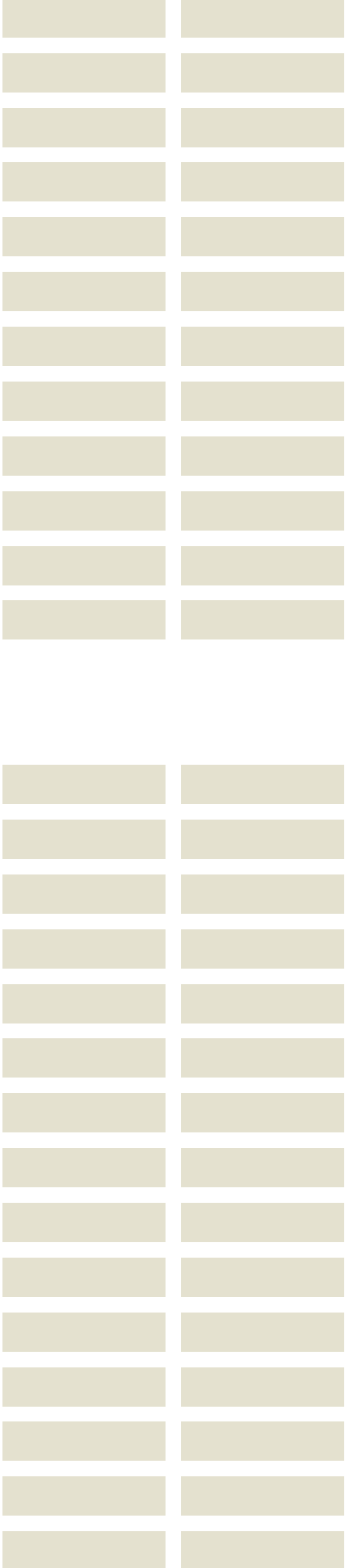
JAMES GRAYSON TRULOVE

BATHROOMS

VACATION COTTAGE BATHROOM

ARCHITECT Balance Associates

PHOTOGRAPHY Steve Keating

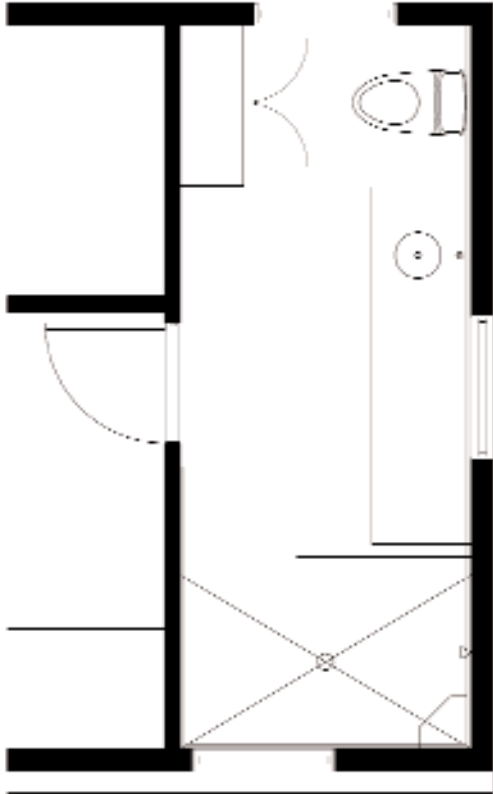


The master bathroom in this vacation home is open to the master bedroom on the upper level. The finishing materials used in the bathroom are repeated throughout the house: custom maple cabinets, composite countertops, slate tile, and minimal stainless steel fixtures and hardware. Composite countertops of resin and paper form the vanity counter, shower bench seat, and shower shelf. Slate tile runs throughout the walls of the bath. A clerestory window between the bath and the master bedroom serves to divide the space while bringing additional light from the bathroom windows into the bedroom. This clerestory glazing also allows the wood-slatted ceiling to run continuously in both the bath and bedroom, visually increasing the size of both rooms. An integral color concrete floor runs throughout the bathroom into the shower. Windows on all three exterior walls of the bathroom frame selected views.

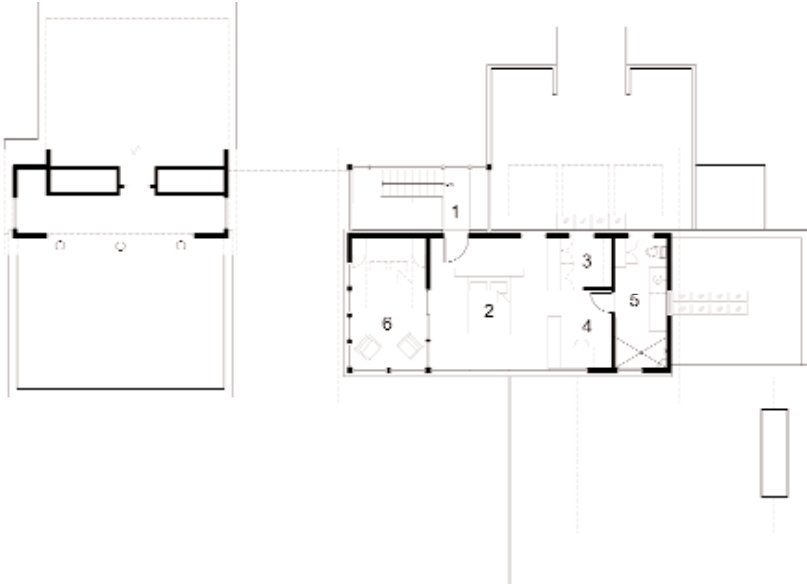
PRINCIPAL MATERIALS PALETTE

- SLATE
- STAINLESS STEEL
- MAPLE
- INTEGRAL COLORED CONCRETE
- PAPER AND RESIN COMPOSITE COUNTERTOPS

MASTER BATH PLAN



UPPER FLOOR PLAN



- 1 stair
- 2 master bedroom
- 3 walk in closet
- 4 study
- 5 bath
- 6 sleeping porch



ABOVE: A view from the master bedroom past the open study area to the master bathroom. A clerestory window visually divides the space while allowing the Douglas fir ceiling to run continuously between both spaces.





LEFT: The vanity's countertop is made of a composite of paper and resin. The open shower and walls are covered with slate tiles, and the integrated color cement floor continues into the open shower, all contributing to a visual impression that the room is larger than it is. Windows on three sides capture dramatic views.

