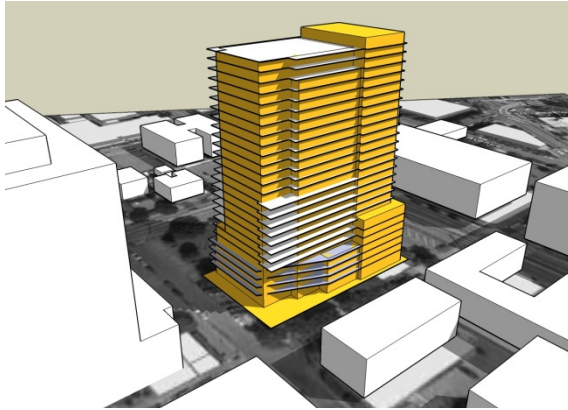




grouparchitect



## Harbor Vista Seattle, Washington

Owner: Mastro Properties  
General Contractor: TBD

This high-rise is one of the first residential towers in its neighborhood and provides a unique opportunity for urban, affordable housing within one block of Harborview Hospital and five blocks of downtown Seattle proper. The tower soars to 240 feet, with roof deck amenity spaces, ground level retail, underground parking and storage units for over 280 apartments including affordable housing in conjunction with City of Seattle requirements. Views of downtown Seattle, the Olympic mountains, Puget Sound, Lake Washington, and Mt. Rainier are all offered to the project's residents. Many units have exterior decks or patios to offer additional open space opportunities. Residential townhomes along the tower's base provide a softened pedestrian scale and experience to complement the neighborhood's constituency of multifamily apartments.

Construction Cost: withheld  
Completion Date: TBD (est. summer 2012)

Site Area: 23,581 sf (0.54 acres)  
Scope of Work: New mixed use high-rise with subterranean garage.  
Density: 556 units / acre

Development Profile: 172,388 sf – residential  
5,747 sf - retail  
62,778 sf – garage

Unit type	Count	Avg. Area
Studio	181	514 sf
1 bed	93	649 sf
2 bed	9	1,249 sf
Live / Work	5	1,556 sf
<b>Total</b>	<b>288 units</b>	

Sustainable Certification: LEED Silver - Targeted